

Center High School: The Next Three Years

CST comparisons within the greater Sacramento region

We published the 2004 California Standards Test (CST) mathematics results for Center High School, in Antelope, CA, along with the scores from several high-performing schools in the same area. This report expands the comparisons to include the nearby schools and districts as well as the large Elk Grove District (in south Sacramento County), two counties, and the State of California scores.

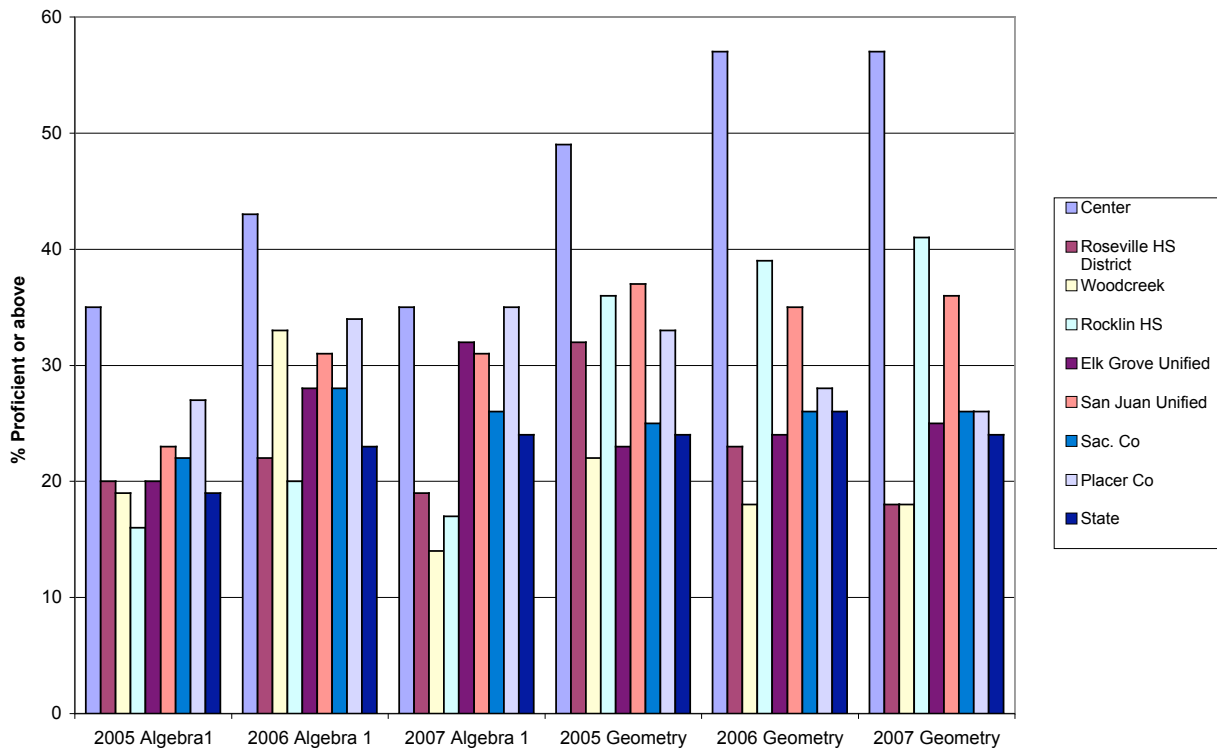
We noted then that the demographics of the Center District are quite average. Three years later, the data for the school continues to be spectacular by comparison to other schools and districts in the greater Sacramento region. We also noted that the implementation of CPM at Center High School, used since its inception in 1989-90, is exemplary. Teachers have been prepared by CPM mentors and the program is implemented as intended.

The table of data below, followed by graphs of the data, contains the school, district, county, and state math scores for Algebra 1, Geometry, Algebra 2, and the Summative Mathematics (equivalent to pre-calculus) tests for the past three years. The Center High School scores are significantly above all of the comparison sites.

Numbers in the table report the percentage of students “proficient or above.”

	Algebra 1			Geometry			Algebra 2			Summative Math		
	2005	2006	2007	2005	2006	2007	2005	2006	2007	2005	2006	2007
Center HS	35	43	35	49	57	57	44	35	50	53	65	75
Roseville HS District	20	22	19	32	23	18	26	17	19	33	35	31
Woodcreek HS	19	33	14	22	18	18	17	8	11	22	40	23
Rocklin HS	16	20	17	36	39	41	35	31	43	49	49	51
Elk Grove Unified	20	28	32	23	24	25	32	27	33	44	44	48
San Juan Unified	23	31	31	37	35	36	29	33	30	48	50	53
Sacramento County	22	28	26	25	26	26	27	26	29	43	43	47
Placer County	27	34	35	33	28	26	24	21	26	38	40	37
State	19	23	24	24	26	24	26	25	27	45	46	47

Math CST



Math CST

